

PWIP2NBV

BULLET CAMERA

2MP H.265 IP IR Bullet Camera with 2.8–12mm Varifocal Lens



Key Features

- 2MP (1920 × 1080) H.265 coding
- Maximum resolution: 1920 × 1080
- ICR auto switch, true day / night, ROI coding
- 3D DNR, digital WDR, HLC, BLC, Defog
- 30~50m IR night view distance
- 1CH audio input, Hardware reset
- Built-in Micro SD card slot up to 256 GB
- DC12V / PoE power supply
- IP67 ingress protection
- Supports mobile surveillance by smart phones and tablet PCs with iOS or Android OS
- Supports dual streams
- Intelligent analytics: video blur detection, line crossing detection and region intrusion detection

The Genie **PWIP2NBV** is a 2MP IP IR bullet camera with a 2.8- 12mm varifocal lens. The camera also features up to 50m IR night view distance as well as being IP67.



Specification

Camera

Image Sensor	1 / 2.8 "CMOS
Image Size	1920 × 1080
Electronic Shutter	1 / 3 s ~ 1 / 100000 s
Iris Type	Fixed Iris
Minimum Illumination	0.008 Lux @ F1.6, AGC ON, 0 Lux with IR
Lens	2.8mm @ F1.6, H.FoV: V.FoV: 56 °; D.FoV:126 ° 3.6mm@F1.6, H.FoV: 89 °; V.FoV: 47.5°; D.FoV:104 ° 6mm@F1.6, H.FoV: 53.8 °; V.FoV: 29.3 °; D.FoV:62.8°
Lens Mount	M12 or Ø14
Wide Dynamic Range	Digital WDR
BLC	Yes
HLC	Yes
Digital NR	3D DNR
Angle Adjustment	Pan: 0°~360°, Tilt: 0°~90°, Rotation: 0°~360°

Functions

Remote Monitoring	Web browsing, CMS remote control
Online Connection	Supports simultaneous monitoring for up to 3 users. Supports multi-stream real time transmission
Network Protocol	UDP, IPv4, IPv6, DHCP, NTP, RTSP, PPPoE, DDNS, SMTP, 802.1x, UPnP, HTTPs, HTTP, QoS
Interface Protocol	Onvif compatible
Intelligent Analytics	Video blur detection, Line crossing detection, Region intrusion detection
Storage	Network remote storage, Micro SD card storage
Smart Alarm	Motion detection, SD card error, SD card full
General Function	Watermark, IP address filtering, video mask, heartbeat, illegal login lock
PoE	Yes
IR Distance	30 ~ 50 m

Image

Video Compression	Main stream: H.265+ / H.265 / H.264+ / H.264 Sub stream: H.265+ / H.265 / H.264+ / H.264/ MJPEG
H.265 Compression Standard	Main Profile @ Level 4.1 High Tier
Resolution	1080p (1920 × 1080), 720p (1280 × 720), D1, CIF, 480 × 240
Main Stream	60Hz : 1080p, 720p (1~30fps) 50Hz : 1080p, 720p (1~25fps)
Sub Stream	60Hz : D1, CIF, 480 × 240 (1~30fps) 50Hz: D1, CIF, 480 × 240 (1~25fps)
Bit Rate	128 Kbps ~ 4 Mbps
Bit Rate Type	VBR / CBR
Audio Compression	G711A / U
Image Settings	ROI, Saturation, Brightness, Hue, Contrast, Wide Dynamic, Sharpness, Image Mirror, Image Flip, NR, etc. adjustable through client software or web browser
ROI	Each ROI to be configured separately

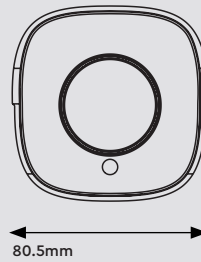
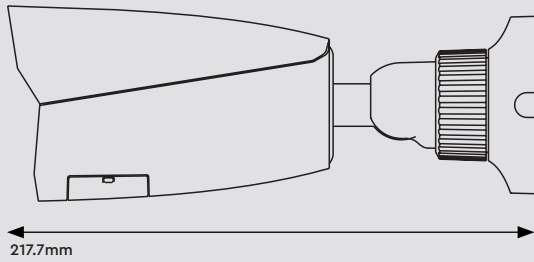
Interface

Network	RJ45
Audio	1CH audio input
Storage	Built-in Micro SD card slot, Up to 256GB
Hardware Reset	Yes

Others

Ingress Protection	IP67
Power Supply	DC12V / PoE
Power Consumption	< 7W
Operating Environment	- 30 °C ~ 60°C (-22°F~140°F) Humidity: Less than 95% (Non-condensing)
Dimensions	217.7 × 80.5 × 80.5 mm
Weight	Approximately 0.65Kg (Net)

Dimensions



Accessories



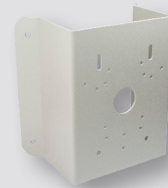
WJBSBWP
Water Resistant Junction
Box for Varifocal Bullet
and Fixed Eyeball
Cameras - White



WIPSJB
Small Sized Junction Box
for Bullet and Eyeball
Cameras - White



WIPMPM
Multi Purpose Pole Mount
Bracket - White



WIPPCM
Multi Purpose Corner
Mount Bracket - White